

NATURAL  
ENGLAND

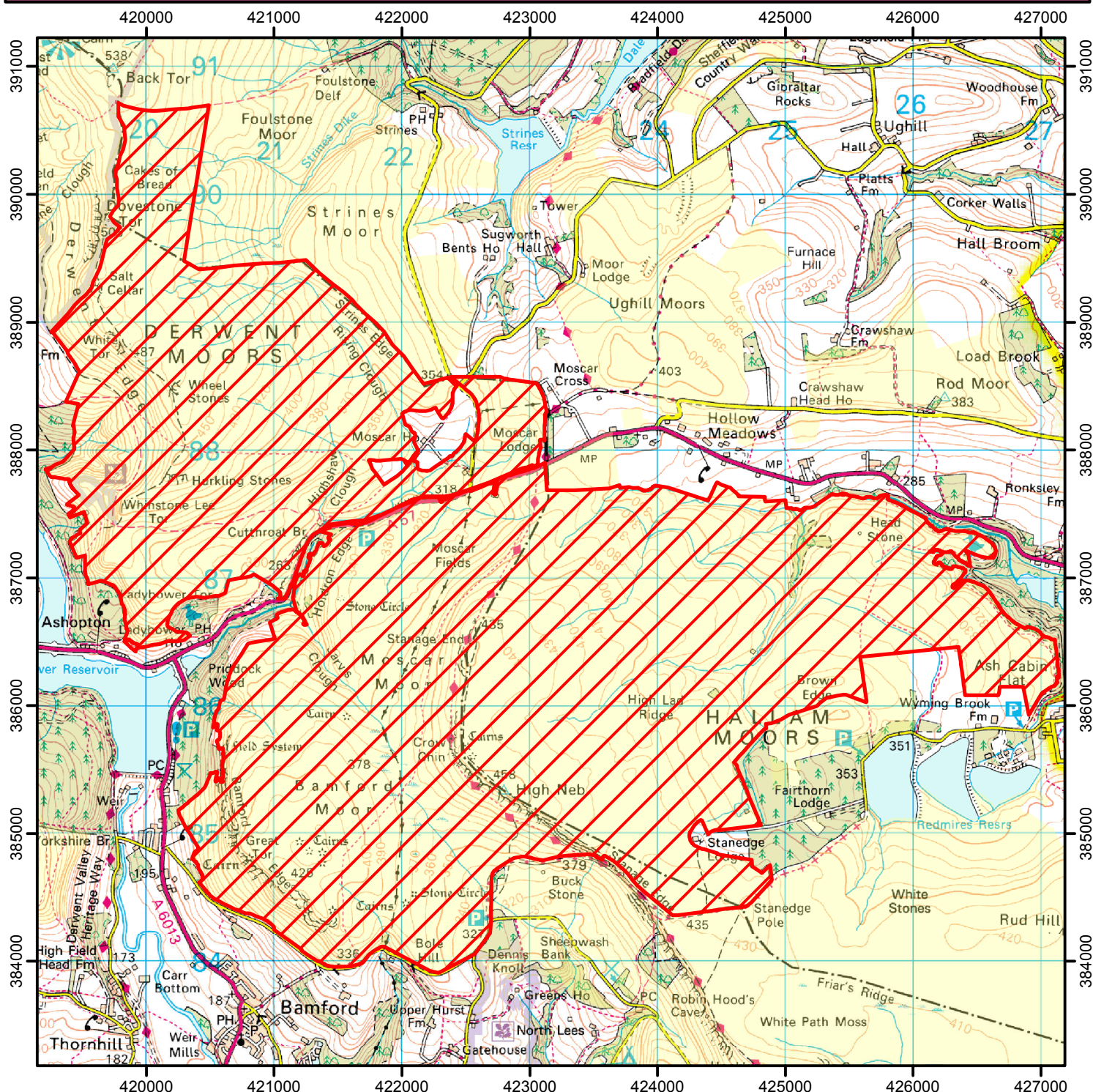
# NO OPEN ACCESS

The open access land shown hatched on the map below is temporarily closed at the land manager's discretion.

This does not affect Public Rights of Way

Closed 2017 - 11th to 26th May, 30th and 31st May  
1st and 2nd June, 5th to 9th June and  
12th to 14th June

Case Number 2017038333



0 1,250 2,500 Metres

© Crown Copyright and database right 2017.  
Ordnance Survey 100022021



Restricted Open Access Land



Open Access Land



For more information call the Open Access Contact Centre on 0300 060 2091  
or visit our website at [www.gov.uk/right-of-way-open-access-land/use-your-right-to-roam](http://www.gov.uk/right-of-way-open-access-land/use-your-right-to-roam)